

# *Upton St Leonards Life*

## *incorporating Church News*

**Issue 132**

**August 2025**



### The Upton Show Committee

Kate Brooks, Chairman  
June Chapman, Secretary  
Chairmaine Malone, Treasurer  
Paula Quinn, Publicity Officer  
Jenny Cunningham  
David Swithin  
Rosemary McLachlan  
Amy Coker  
Chris Brooks  
Sandra Chandler  
Liz & Andy Skelton



It takes a lot of time and effort for the volunteers who make up the Upton Show Committee to organise our annual village show each September. Meetings kick off in February then there are regular get togethers to plan the detail.

Apart from the admin tasks eg developing the show schedule, booking the marquee etc, there is also sourcing the prizes and refreshments which are supported by local businesses and organisations. Some of these organisations include Morrisons, Upton Village Store, Portway Farm Shop re supplies plus the Scouts who man the popular hot dog stand and many others.

Set up starts on the Friday with the marquee going up, setting up the tables, then the main village hall and annexe.

The clear down is as busy as the set up and takes lots of effort to dismantle the whole show area.

In addition to the committee members, Jim Browne looks after the Show Website and is the show official photographer plus Sandra Hawksworth, who with her team of helpers do a fantastic job with refreshments in the village hall kitchen.

So a big thank you to the committee on behalf of all residents in Upton for your efforts and to those who have contributed in the past and the present.

It's traditions like the village show which make living in Upton a different experience than if we were in a city environment.

If you would like to help make this year's Show a success please see page 5 for details



Pictures  
from  
last  
year's  
show



### **Do you have a child with special needs?**

If you do, please have a look at page 14 where a village resident is trying to bring together people in a similar position for mutual support

### **Thanks!!**

It's taken a while to get there, but many people along the High Street and Portway are very pleased with the re-surfacing job recently completed by Highways.

Thanks to the Parish Council for their support in getting this work done

### **Near Miss!!**

There was almost a collision recently between a child riding an e-scooter at speed and a lady coming out of her house onto the pavement at Ash Grove.

Can parents please encourage their children to ride carefully whilst travelling around Upton as there are may elderly people in the village. Thank you.

### **Upstagers**

Last Chance for tickets to Flat Spin, a performance by the Upstagers.

See page 4 for details.

Some ticket availability on the door. Performance at 7.30pm and bar open at 6.45pm. Book now!!

# What's Been Happening in Upton?

## Ladies Probus Report

In June, we had the second part of our talk by Steve Tilley. We had heard the first part, in February this year, when Steve told us about his walk around the Welsh & English coast line. He took us from his own local area of Slimbridge, which was his leaving point, around the Welsh coast line then over to scenic Northumberland & down the east coast of England to Essex. We then stopped at old Knobbly, the 800 year old English Oak tree growing in Mistley, Essex.

Steve continued his talk & took us from Essex (an underrated county was Steve's verdict) around the Kent coast line to the South Coast & along to Land's End, having crossed many river mouths. These were done with great difficulty as Steve discovered that, in the winter months, lots of services close as the tourist numbers have dwindled away by then. But local Facebook groups proved to be very useful in coming to his rescue to facilitate these river crossings!

After a few more rivers, & appearing very briefly on Points West TV, Steve ended up back again in Slimbridge for a big home-coming welcome. Steve had completed almost 4,000 miles in 11 months with a lot of wild camping - and all in those cold winter months! He now has a new hip, which he is already testing out, so another long hike will soon be in the offing!

For our August meeting, Caro Day will tell us all about the History of the Everyman Theatre in Cheltenham. Please come & join us in the BMI at 10am on Wednesday 13 August to hear all about it, as it sounds very interesting!

**Janet C**

## Upton St Leonard's W.I. Report . Monday 7<sup>th</sup> July 2025

From Medieval times to the present day, our speaker educational officer Marion Hill gave us a detailed, informative talk on how history and people shaped our country today. Covering Global warming, landscape, loss of wild life, forests and woodland, lifestyles, and food production and action if taken.

The 'Green Pledge Project' is funded by the National Heritage, reflecting on our past, present and future. Based at The Hub at Gloucester Archives in Alvin Street; holding a treasure trove of documents, maps, artefacts and photographs, all available for the public to research.

Memories were shared, with local people's voices recorded showing a different lifestyle to our own. In centuries past the land was shared between everyone from the Lord of the Manor and his workers. Oxen and shire horses were used to plough the fields. Beautiful harnesses and brasses were the pride of the ploughmen.

Wildlife was almost decimated in 1532 when deer, foxes, and even hedgehogs were classed as vermin to be killed, also birds for their plumage, until an Act of Parliament in 1869 protected all wild birds and their eggs, from collectors.

Around us our countryside is changing fast and woodland disappears; green fields are built on. Our wildlife struggles and temperatures rise with the global warming. These wake up calls need to be addressed and action taken which is 'The Green Pledge Projects' aim. Our countryside has changed so much through human activity. Not always for the better.

Business was brief, sadly one member was in Hospital, but there were 2 birthdays.

On Monday, August 11<sup>th</sup> there will be a garden tea at Angela's, 3-5 pm. Scones, cake, strawberries and cream £8 per ticket. A fundraiser for the Cancer charity 'Charlies'. Husbands and friends are welcome to join us there.

**On Saturday, 13<sup>th</sup> September, at the 'Upton Show'** - We are holding a 'White Elephant' stall. Please look out useful or decorative items to donate (NO SHOES OR CLOTHING OR BOOKS please).

Our next meeting after the 'Garden Tea' is on Monday 1st September. 2 p.m. Upton Pavilion. What's in the Bag?

A game called What's in the Bag and a fun Quiz, by committee member Pam Kidgell. All ladies welcome.

**Kathy Quant**

# July Parish Council Report

## Attenuation Pond on land owned by Manor Farm

Those of you who walk your dogs regularly across the fields or on the way to Prinknash Abbey Cafe will have noticed major ground works taking place which is part of the flood prevention activity the Parish Council requested with Highways quite some time ago.

It is expected that this work will be completed before the end of July and a full update will be printed in our newsletter when the full information is received, explaining its purpose and expected benefits etc.

## Upton St Leonards Community Speedwatch report

This report shows speeders recorded at or above 35 mph in the 30 mph zone at Upton St Leonards; SW bound (Churchfield Road LP18) between Sun 1 Jun 25 and Tue 1 Jul 25 inclusive.

The “hotspots” shown below indicate where the highest incidence of speeding is occurring.

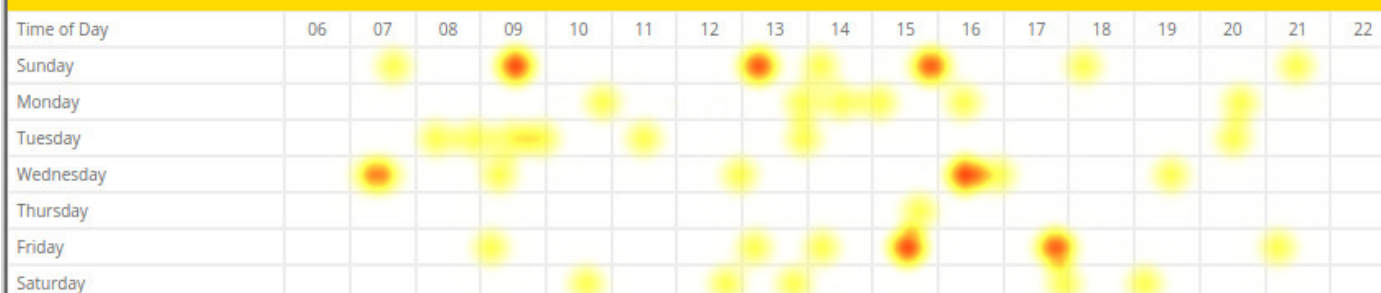
Roy Balgobin, Parish Clerk for USL is acting as AutoSpeedWatch/Community Speedwatch coordinator for Upton St Leonards.

All speeding incidents have been manually verified by reference to photographs by registered users and Community Speedwatch volunteers assisting Autospeedwatch Limited .

Offenders are already being contacted and there will be a six-monthly Police Report sent to the Parish Council which will show letters that have been sent to drivers as a result of speeding in Churchfield Road.



## Recent Highest Speeding Activity



## Resurfacing of Portway and High Street

Its great to have the newly tarmacked surfaces but this has encouraged more speeding now the poor surface and potholes are no longer there.

As a result, 30mph painted road surface signs have been asked for and white line edging all the way down to the bottom,.stopping by Portway Farm.

## Parish Website

Have you seen the updated Parish website yet? - there is useful information on what the Parish Council are doing on your behalf, latest news, community links, road closures and information on planning applications.

Why not have a look when you get the chance to get a better understand of things that are happening in Upton!!

**[www.uptonstleonards-pc.gov.uk](http://www.uptonstleonards-pc.gov.uk)**

# What's coming up in Upton?



**BMI Entertainment**

**Saturday 9th August**

BMI's Summer Party and Pig Roast

Come along and meet up with your family and friends

Food available from 3.00p.m. including pork rolls

There will be music in the evening

**(Please note, the car park will be closed for safety reasons)**



**BMI Entertainment**

**Saturday 2nd August**

Entertainment Night from 8.00p.m.

with

**Aaron Cook**



## Dear Readers

We have been producing this newsletter for almost 11 years now and during that time we have had good feedback from Upton residents.

What we would like to know is whether there are any subjects or regular items you would like to see in your village newsletter which we are not currently covering?

Please let us know via our website, direct to any editor and/or in hardcopy via the village hall postbox.

Thank you

Editor



# Upton Show Saturday 13 September 2025 - 43 Days to Go!!

([www.uptonstleonardsshow.com](http://www.uptonstleonardsshow.com))

Not long to go before the Upton Show welcomes everyone to the Village Hall and grounds. Plenty of time for you to plan your exhibits! The schedules are available at the Village Store, Portway Farm Shop and on the Upton Show website.

We would be grateful to receive donations for the Tombola/Bottle Stall, pre-loved teddies for the "Teddy Tombola", books and jigsaws. Cakes for the refreshments would also be very much appreciated.

**Can all trophies and cups from 2024 Show please be returned to Kate Brooks so engraving can be arranged before the show. Many thanks.**



## Volunteers Needed - Can You Help?

The annual show relies on the collective efforts of volunteers so we are asking again for Your support on Friday 12<sup>th</sup> and Saturday 13<sup>th</sup> September. Details are shown below.

### **Friday – day before the show**

- Setting out the tables and signage in the marquee – we try to do this in the morning but it does depend on when the marquee is put up. We won't know until nearer the time. The tables are heavy so we need volunteers who are fit and strong.
- Putting tickets on tombola and teddy tombola prizes, sorting donations, books etc and sorting and labelling trophies. We do this at the same time as setting out the marquee but it is light work and can be done sitting down.
- Setting out tables and chairs in the main hall and annexe ready for refreshments. This cannot be done until later on Friday evening as the hall is in use. The Scouts often help with this, which is greatly appreciated.

### **On the morning of the show**

- Erecting the gazebos – we have 7 to put up, each needs 4 people but they are not too heavy.
- Tombola, teddy tombola and booksale stalls need to be set up along with the ice creams and hook-a-duck. Signage put in place, trophies put on display in the marquee and judges assisted in recording their results.
- Checking the site is safe, putting out cones and security measures ready for opening.

### **During the show**

- Manning the main gate, tombola, teddy tombola, ice creams, book stall, hook-a-duck, bouncy castle.
- Stewarding the dog show, security on the main gate and car park entrance.
- Serving refreshments, clearing tables and washing up in the hall kitchen

### **After the show (as soon as we can)**

- Taking down the gazebos
- Clearing the marquee and putting down and stacking the tables (as above this is quite heavy work)
- Putting away tables and chairs in the hall and annexe and clearing away
- Packing up remaining books and taking to charity shop
- Bagging up remaining teddies, packing up hook-a-duck for next year
- Clearing site

If you are able to help or want more information, please contact Kate Brooks

## **Timetable for the day**

<u>For Exhibitors</u>	
8-10.15am	2pm GATES OPEN
Exhibits to be taken to Village Hall/Marquee. Collect your entry slips from the desk and stage your exhibits with the entry slip on display	2.45pm FAMILY DOG SHOW (£1 per entry on the day)
10.30am	<ul style="list-style-type: none"><li>• Best bitch</li><li>• Best dog</li><li>• Dog with the "waggiest tail"</li></ul>
Exhibits to be ready for judging by 10.30am prompt	3.15pm
4.45-5.15pm	<ul style="list-style-type: none"><li>• DOG MOST LIKE ITS OWNER (50p per entry on the day)</li></ul>
All exhibits to be removed and taken home	4.15pm
	<ul style="list-style-type: none"><li>• PRIZE GIVING - at the Marquee</li></ul>

# Advertising

If you use any of the services provided by our advertisers, please mention that you saw them in USL Life. They can then understand the impact of their advertising. Thank you

**B.A. Electrical Services**



**Domestic & Commercial  
Insured & Registered**  
For all your Electrical Needs  
A Professional and Friendly Service  
Quality Work at Competitive Prices  
For a Free Estimate call Bernie  
**01594 368607 / 07881 981352**

**Emerald Decorating**



Local to Upton  
Reliable  
Friendly  
Attention to Detail  
Competitive Rates  
No Job Too Small  
Fully Insured  
**07949 194464**

**USL Village Store**  
**POST OFFICE**  
Mon-Fri  
7am-7pm  
Sat  
7am-6pm  
Sun  
7am-12pm

**Your Village Store and Post Office**  
**SHOP LOCAL**  
We stock local fruit, veg, meat, milk, bread, lardys and cakes. Groceries, toiletries, snacks, sandwiches, drinks, cards and stationery and many other surprising items.  
**SUPPORT LOCAL!**  
Rahul and Seeta  
Churchfield Road 01452 618189  
@uslvillagelife




**David Cridland Contracting**  
Fencing, Ground maintenance and groundwork contractor

3 Ton mini-digger with driver available

All types of fencing supplied and erected.  
Hedges cut. Trees pruned. Ground cleared.  
From small gardens to farms, no job too small.  
Service and reliability guaranteed

Fully insured 30 years experience

**01452 311215 or 07836 279974**  
COMMELINES MILL FARM  
UPTON ST LEONARDS GL4 8EG



**The BMI Club**  
(Est 1898)  
Bondend Road  
Upton St Leonards

Two bars, wide screen TV with Sky/BT Sports, Snooker, Pool and Skittle Alley.  
Regular entertainment nights.  
Private function hire.

**Enquiries about membership - just call in and see Brian our Steward for more details.**  
Open from midday, 7 days a week.

**Tel. 01452 616384**



**J.B. RD CHIMNEY SWEEP**

**Traditional and Power Chimney Sweeping from £55**  
Open Fires, Boilers, Cookers and Stoves Serviced  
**Chimney Pots, Cows and Bird Guards Fitted**  
Flue Liners and Stoves Installed to Latest Regulations  
**Cctv Chimney Camera Surveys**  
**Drone Surveys**

PHONE ME TODAY FOR AN APPOINTMENT  
**01452 521732**  
**07973 905151**  
**sootybloke@gmail.com**

HETAS NVQ

**Professional Painting Service**



**Over 30 years experience**

For a FREE quotation please ring me, David Holder  
**Tel: 01452 611866**  
**Mobile: 07977 099996**  
or Email:  
**holdermaxine@aol.com**  
**DJH Home Services, Gloucester** Established 1984

## Feature Article - A Personal view on Retirement

Early last year and after a long and thorough consideration I completely changed my life; I gave up work! It wasn't an easy decision because I really loved certain aspects of my job. Family, friends, and colleagues all freely gave their advice even though I hadn't asked for any, but I listened patiently and as usual I did what felt right for me and my family.

During the first few weeks I felt as though I was on holiday. Then came the feeling of guilt when sitting in the garden, going out for the day, or meeting friends instead of doing those jobs I'd kept putting off whilst working. Happily, that didn't last too long and a friend welcomed me to the "I'll do it tomorrow club". So, I took my breakfast into the garden as often as the weather allowed and spent as long as was needed weeding the garden and dead heading the flowers before going inside to try and learn how to edit photographs and continue designing and creating greeting cards.

My initial adjustment wasn't as difficult as people had led me to believe but, that could be because I worked part time for many years so already had interests outside of home and work. However, my giving up work upset my husband's equilibrium as he'd given up work two years before and had established a routine for himself.

With me retired his plan was that we would frequently go out and about, or spend a few days away and he felt disappointed when I wanted to stay close to home, enjoying life day by day and just seeing what popped up. Surprisingly, I became very lethargic for a few months; a time when I wasn't interested in things that needed commitment or prolonged concentration, including responding to messages from friends and writing for this magazine! So maybe working part-time hadn't prepared me as well as I'd thought or perhaps other factors affecting my life were the cause.

We are now settled into our retirement, though continuing the compromises that married life always requires; we are enjoying our time together and have a fairly full diary as well as lots of ideas of places to visit and things to do.

The future is full of possibilities that I look forward to exploring, though I have taken up the activity I'd promised myself I would at this stage of life (more about that in a future magazine!). There are many activities and groups in Upton and the surrounding areas and I look forward to discovering the ones I enjoy most. Also, the volunteering options available are vast but at the moment I am not ready to make that commitment; someone advised me to fully consider any plans before volunteering otherwise it can feel like you are back at work.

At the moment there is a pleasure in having the time to be with family and friends, a joy to walking around the village or through the fields and a freedom in being able to do whatever I feel like.

**Jane R**

### Cricket Report

At the time of writing, school has just ended and the cricket club's youth training and matches have come to an end for the season. Youth training will resume indoors in October. Once again, the club ran the England and Wales Cricket Board franchise called "Dynamos", which is a well planned training programme for boys and girls in school years 3 to 6. It's great fun and the children seemed to really enjoy it. We then built up our Under 9 and Under 11 teams from Dynamos participants, plus a few older year 6 boys who were with us last year but didn't do Dynamos. In matches neither of these age groups did very well. Last year the Under 11s were almost unbeaten, so the team moved up to a stronger division, which proved too good for them this year.

By contrast, the Under 13s, of course including some from last year's Under 11s, won more than half their games. The same goes for our Under 15s. This is great for the club, because these teams feed the adult teams of course.

There has been a bit of a revival in Sunday friendly games – by the end of August we should have played 6, in contrast to the last few years when there have been only one or two. Sunday friendlies give the juniors a good introduction to adult cricket.



So, on to the adult league teams. The Wednesday evening team plays T20 games at a level that is more fun than competitive, and this year won 4 and lost 6. The Saturday 2nd team plays in the Gloucestershire County League at level 8 (one level above the bottom), and at the time of writing has won 3 and lost 9 games with 6 more to play – they should avoid relegation, just. The Sunday 1st team has struggled in level 6 of the County League, won 1, lost 11 at the time of writing. The players don't seem to be able to put together consistent performances. Relegation looms!



## New Every Morning by Susan Coolidge 1835-1905

Every day is a fresh beginning,  
Listen my soul to the glad refrain.  
And spite of old sorrows  
And older sinning  
Troubles forecasted  
And possible pain,  
Take heart with the day and begin again.

## Thoughts on happiness

Happiness is good health and a bad memory.  
(Ingrid Bergman)

Happiness is having a large, loving, caring, close-knit family in another city.  
(George Burns)

## Book Review

British Summer time Begins  
by Ysenda Maxtone Graham

The author of this book interviewed people throughout the country over a period of eighteen months.  
She recorded the recollections of childhood holidays between 1930 and 1980 - both holidays at home and family holidays away.

This is a nostalgic record of long, sunny days and a surprising amount of freedom when children could entertain themselves until hunger drove them home.

It will take many of you back to your pre-internet childhood and make you smile in recognition.

Perhaps you will be driven to record your own school holidays. If so, please submit your thoughts to Upton St Leonards Life!



## Pippas's Song by Robert Browning 1812-1889

The year's at the spring  
And the day's at the morn;  
Morning's at seven;  
The hill-side's dew-pearled;  
The lark's on the wing;  
The snail's on the thron;  
God's in his heaven -  
All's right with the world!

## Modern Love by Douglas Dunn - born 1942

It is summer, and we are in a house  
That is not ours, sitting at a table  
Enjoying minutes of a rented silence,  
The upstairs people gone. The pigeons lull  
To sleep the under-tens and invalids,  
The tree shakes out its shadows to the grass,  
The roses rove through the wilds of my neglect,  
Our lives flap, and we have no hope of better  
Happiness than this, not much to show for love  
But how we are, or how this evening is,  
Unpeopled, silent, and where we are alive  
In a domestic love, seemingly alone,  
All other lives worn down to trees and sunlight,  
Looking forward to a visit from the cat.

## Severn Trent Advice on Water Conservation



I am sure we have all enjoyed the recent lovely sunshine and warm weather but with the driest March and sunniest April for 60 years followed by a hot June (third hottest on record), and little rain forecast for July, reservoirs were on average down to 71% of normal capacity with some just above 50%.

The suggested actions cover things like turning the tap off when brushing teeth, taking shorter showers and fixing any leaking taps. Another idea during the very hot weather is to keep jugs of water in the fridge so taps don't need to be run to get colder water. Using water butts to water plants is an obvious winner.

Severn Trent are working hard to reduce their own leaks on an ongoing basis.

Car drivers are asked to wash their cars with a bucket and sponge instead of a hosepipe which will also help and by the time you read this, there may be a hosepipe ban in place. Please check latest position with Severn Trent.



Rev Helen Champion

# Saint Leonard's Church

Churchfield Road  
Upton St Leonards  
Gloucester  
GL4 8AT



As I write, I've got one eye on the Wimbledon men's final. Two athletes on court, both utterly focused, evenly matched, pushing themselves to the limits in pursuit of the same goal: victory. Only one will lift the trophy, of course, but the quality of the match—the courage, skill, and determination on display—speaks of more than just winning. It's a reminder of the beauty and discipline of the game itself.

Meanwhile, the Women's European Football Championship is in full swing. Unlike Wimbledon, these are team efforts: fast-paced, cooperative, strategic. Victory in football doesn't rest on the shoulders of one individual, but on communication, shared responsibility, and mutual trust. It's fascinating to observe the contrast between the solo determination of tennis and the collective striving of football—and yet how both tell us something about the human spirit, and perhaps about faith too.

Because, whether we're talking sport, or life, or faith, it's easy to be drawn into the idea that success is all about winning. But winning—while wonderful— isn't everything. Tennis players talk about playing "a beautiful game" or giving their all, even if they fall short of the trophy. In life too, there are moments when we don't get the prize we hoped for, but we still grow, still learn, still bless and are blessed. Playing well—living well—is just as important as where we end up on the scoreboard.

That's one of the great paradoxes of the Christian faith. Jesus never won any worldly prizes. No medals, no trophies, no great acclaim in his lifetime. And yet his life—lived with love, justice, humility, and grace—changed the world. He ran the race with endurance, and invited others to walk with him, not as competitors, but as companions.

So, whether you're rejoicing with the winners of the tennis and the football, finding a patch of shade in the garden, or simply longing for rain, I wish you a month filled with moments of grace. Win or lose, may we all keep playing the game that really matters: the game of love, of compassion, of community, and of faith.

Rev Helen

## Church Services and other events for August

Sun 3 Aug 8am Holy Communion  
10am All Age Morning Worship

Bell ringers meet every Wednesday in the tower at 7.30pm

Sat 9 Aug MU Mary Sumner Day picnic at Down Hatherley from 11:30

The Youth Group and Little Pilgrims do not meet in August

Sun 10 Aug 10am Holy Communion

The church's WhatsApp group 'Friends of St Leonards' is a useful guide to what is on (and last-minute changes). To join contact Rev Helen or Gill Howell.

Sun 17 Aug 10am Holy Communion

Sun 24 Aug 10am Holy Communion

Sun 31 Aug 10am Holy Communion

## Who's who in the church

**Parish Priest:**  
Rev Helen Champion

**Churchwarden:**  
Gill Howell

**Parish Safeguarding Officer**  
Sue Downey

**PCC Secretary**  
Kay Hutton



### Who we are

We are a network of fun-loving sport and Christian faith groups where you can try different sports, make new friends and explore what life is all about. Find us across Gloucestershire running clubs in schools, community facilities and open spaces. At Sportily you can get involved in sports based activity youth clubs, after school multi-sports clubs, residential activities, adventure sports, family sports and fun fitness activities. All you need to do is.

Give it a go

## St Leonard's Youth Group

The Youth Group is really becoming a popular choice on a Friday evening for the local children. We now have 19 regular members attending to join in the fun led by Sportily.



The group meet regularly on a Friday evening in the old school room but during the recent hot weather they were able to get out of the heat and into the welcome coolness of the church.



There are no meetings during August but please feel free to come and join in the fun when we re-open in September



**Look forward to seeing you**



Our other new venture, Little Pilgrims, is also beginning to settle into a routine and is enjoyed by the children who come along. The Sunday school is primarily for school age children but toddlers are welcome if they come with a parent.

Little Pilgrims will be taking a break in August but will start again in September when we hope to open our doors to more children.

Please bring your children along to enjoy all we have to offer. They will be well looked after by our group of volunteers who are all up to date with safeguarding standards and regulations.



## Nearly There!

It's been a long time and lots of hard work for everyone concerned with Raising the roof but at last the time has come to start clearing the church ready for work to begin.

A lot of fun has been had during this time, Barn Dances, Quiz Nights, Fish and Chip Suppers, Wine tasting to name but a few.

Thank you so much to all the volunteers, fund raisers and of course the team who have worked so hard to help get money from lottery funds and grants, your efforts have been much appreciated and now our fine old church will soon be waterproof and safe.



## Gloucester Cathedral Visit

For the July meeting members were out and about on a visit to Gloucester Cathedral. The tour lasted over an hour and our guide; Nick Dutton was not only knowledgeable but amusing too. Everyone agreed they had learnt new things about the building despite having visited before. The magnificent Cathedral was spared from Henry VIII's reformation because in 1535 he had visited it with Ann Boleyn and discovered that one of his ancestors, Edward II was buried there having died at Berkeley Castle in 1327.

Our guide highlighted the extraordinary fan-vaulted cloisters, the Great East Window and the Lady Chapel where some of the finest Arts & Crafts glass can be seen. On display in the Lady Chapel was the Mothers' Union Diocesan Banner in readiness for the Commissioning service to be held the next day when Bishop Rachel commissioned the Diocesan President, Doreen McLellan and the Trustees for the forthcoming Triennial. Our party then retired to the Monk's Kitchen for a very welcome drink and cake.



There is no formal Branch meeting in August but August 9th is marked as Mary Sumner Day by the Church of England in recognition of Mary founding the Mothers' Union in 1876. This is usually celebrated with a Diocesan picnic but this year is different and will be held in and around the small village of Down Hatherley. There will be plenty of parking in the church field of St Mary & Corpus Christi, GL2 9QB. Just look out for the signs and the bunting! It will commence at 11.30am and from noon bacon butties and drinks will be served in the gardens of the Old Rectory.



Please bring a chair and a sun hat. The winners of the annual draw will be announced plus stalls including the range of MU cards and gifts. It will conclude with the usual Mary Sumner service.

Mary Sumner (1828-1921) was the founder of the Mothers' Union, a worldwide Anglican women's organisation.

## Giving to the Church

There are many ways to support the church, both for its day-to-day running and the "Raise the Roof" appeal, which is still going. Worshippers can give in the plate, but it may be more convenient to pay by card or set up a standing order, or better still, use the Parish Giving Scheme (which is equivalent to a standing order). The '500 Club' for £5 per month gives access to two monthly prizes of £30 and £20 and a £500 prize in December. Lastly, you can link to us through 'easyfundraising' which creates small payments to the church when you buy things online. Contact any church official to get our bank details, 500 scheme, or use the links below.

### Parish Giving Scheme

<https://www.parishgiving.org.uk/home/>

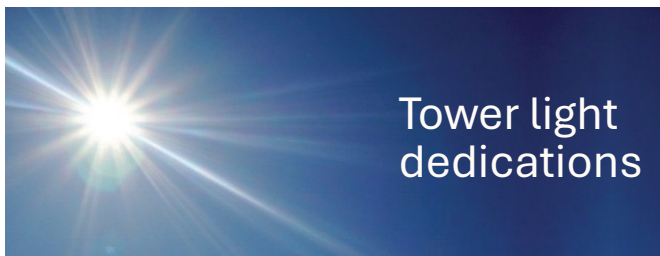
<https://www.easyfundraising.org.uk>



### 500 Club Winners for July

First Prize	No. 59
Second Prize	No. 71





*If you or your family wish to sponsor the lights in celebration of a birthday, an anniversary, for a loved one's life or for any other reason then please contact Jenny Cunningham for more details.*  
*Please note that the deadline of the Church News is the 8<sup>th</sup> of the preceding month.*

The Church Tower is lit in loving memory of a dear Father and Grandfather, Elwyn Clywedog Wilson, who would have been 100 years old on the 6th August.

On the 12th August, the Church Tower is lit in celebration of the 19th birthday of Charlie Davies, kindly sponsored by his Nanna, Brenda Davies.

Dave and Val Knight are sponsoring the Tower Lights on the 23rd August in celebration of their Golden Wedding Anniversary.

The Church Tower is lit on the 26th August in memory of Keith Davies on his birthday, sponsored by his loving wife Brenda.



The school invited village residents and the church congregation along to their end of term school play performed by year 6, this year's leavers.

Rev Helen and Gill went along and have reported that they had a really lovely afternoon filled with laughter, the play was excellently performed and stage managed by so many children.

Well done all of you and best wishes to all of year 6 as they move on to their new schools.

## Gill retires as a School Governor

At the end of the school term in July, Gill Howell retired as the church representative governor. Gill has served in this position for 7 years and to show their appreciation the school presented Gill with a beautiful blanket which she was pleased to accept.

The wording on the blanket is- You are Beautiful, Victorious, Enough, Created, Strong, Amazing, Capable, Chosen, Never alone, Always loved.

Jon Wassuna-Smith will join the board of governors as Rev Helen's representative, We wish him well in his new role.



# Advertising

If you use any of the services provided by our advertisers, please mention that you saw them in USL Life. They can then understand the impact of their advertising. Thank you

**timewatch** 

**BRAND NEW WATCHES**

**WATCH BATTERIES & STRAPS**

**WATCH BATTERY RESEAL & PRESSURE TEST**

**BATTERIES FITTED FROM ONLY £9.99**

Strap Replacements    Strap Adjustments    Watch Springs    Battery Replacements



timewatch is a family run business that prides itself on its exceptional customer service.



Pop in and see us today at Unit K1 Regent Arcade  
Or alternatively visit us online to book a time slot @  
[www.timewatchshopcheltenham.co.uk](http://www.timewatchshopcheltenham.co.uk)

**Your qualified village electrician**

 **MJ Boon**  
Electrical Ltd.

07773 626241  
matt@mjboonelectrical.co.uk  
www.mjboonelectrical.co.uk

- Free estimates and advice
- All aspects of electrical work undertaken

**APPROVED CONTRACTOR**    **DOMESTIC INSTALLER**

**CEDAR MOTOR HOUSE LTD**

 **Vehicle Servicing & Repairs**  Est 1968

MOT Testing for Petrol & Diesel Vehicles  
**01452 617240    Mob: 07976 322735**

Grove Court, Upton Hill,  
Gloucester GL4 8DA

- We use the latest techniques and diagnostic equipment to service any make of car to dealership standards.
- Tyres, batteries and exhausts fitted. Clutch and timing belt replacement.
- Insurance & Accident repairs, welding service.

**Your Local Garage**  
*We pride ourselves on our friendly, honest and reliable service.  
We can collect your vehicle from your home.*

 **CHURCHFIELD AUTOS LTD**  
Quality Used Car Sales in Gloucester  
[WWW.CHURCHFIELDAUTOS.CO.UK](http://WWW.CHURCHFIELDAUTOS.CO.UK)

Get in touch today!    01452 447090    07437 536764  
sales@churchfieldautos.co.uk    @churchfieldautosltd





*We also buy cars! Get in touch if you have a car to sell.*

35 Oxstalls Lane, Gloucester, GL2 9HN

**Annie's Gardening**

*An extra pair of helping hands*

General gardening services  
Beds and borders services  
RHS level 2

**07899 958436**

Email: [anniesgardening2@gmail.com](mailto:anniesgardening2@gmail.com)  
Website: [www.anniesgardening.co.uk](http://www.anniesgardening.co.uk)

**CHORLEY'S**  
Cotswolds Heritage since 1862

**Complimentary Auction Valuations**

Monthly Auctions of Art & Antiques  
Probate & Insurance Valuations  
Open Valuations every Thursday 9.30am-1pm

**01452 344499**  
[info@chorleys.com](mailto:info@chorleys.com)  
Prinknash Abbey Park GL4 8EU

**ARMSTRONG**

**REMOVALS & SERVICES** 

EST. 2000

A local company, providing House and Commercial Moves, Man and Van, Storage and House Clearances.

Contact us for your free quote:  
**07718 235093**  
[armstrongremovalsandservices.co.uk](http://armstrongremovalsandservices.co.uk)

## Information

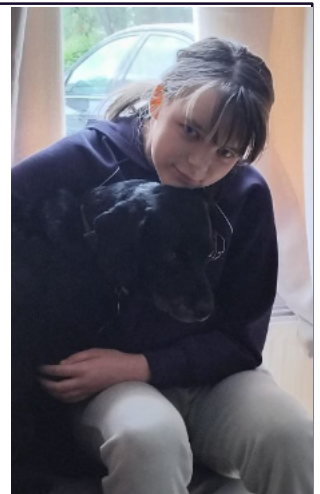


### Setting up a Support Group for Parents with Special Needs Children

Hello, my name is Freya, I live in Upton St Leonards and I am mum to three children, one of whom has special needs, my daughter Brooke (pictured right).

Bringing up children with special needs eg Autism, ADHD etc, can be both challenging and isolating.

For those reasons, I wanted to see if any mums and dads who were in similar circumstances would be interested in joining a social/support group, meeting on a regular basis with their children.



To kick things off, I will be at The Coffee House in Upton on Saturday 6 September at 1pm to meet with anyone who would like to be part of such a group.

If that idea appeals, I am suggesting we would meet on the first Saturday of each month at a regular time and hopefully during school holidays.

If it goes well and there is some interest, we can then develop ideas around WhatsApp, Facebook etc, and social activities for parents (with and without their children).

I hope to see you on the 6th September but if you would like to contact me before that date.

**Thanks Freya**

## *The Lady Downe Trust*

Registered Charity no. 286577

**Are you intending to go on to further education this September? Going to college or university? Then the Lady Downe Trust may be able to help.**

The Lady Downe Trust is a small charity based in Upton St Leonards that provides grant aid to residents of the parish who are in need, or to support the education of local children and young people under the age of 25.

Visit our website [www.ladydowne.org](http://www.ladydowne.org) for more information, to see a list of the eligible streets in Abbeymead, Abbeydale and Coopers Edge or to download an application form. Alternatively, you can request a form from the clerk at [clerk@ladydowne.org](mailto:clerk@ladydowne.org)

**If you are a student going on to further education in September, remember to apply for a first-year grant (see website)**

Clerk to the Trustees – Mrs K Brooks



## RAILWAY 200

Railway 200 what is it all about? This year is the 200<sup>th</sup> anniversary of the first journey on the Stockton and Darlington Railway, which ran for 26 miles from Shildon to Stockton via Darlington in the county of Durham on 27<sup>th</sup> September 1825. The train consisted of wooden coal wagons carrying passengers and a basic passenger carriage. The birth of railways would transform how the world traded, travelled and communicated. Horse drawn wagon ways had operated for hundreds of years. This was the first service pulled by steam power.

Events have been arranged throughout the year, including railway works being open for visits special trains and exhibitions. It started on 1<sup>st</sup> January when there was a mass "Whistle Up". At 12 noon over 200 steam, diesels and electric locomotives sounded their whistles or hooters together. This happened all over the country mainly on preserved railways. Railways in Europe also joined in, in tribute to the S&D.

The first inter city railway from Liverpool to Manchester was opened in 1830. With the famous locomotive the Rocket. On the 27<sup>th</sup> September this year a train with a replica locomotive and wagons will make the same trip as in 1825. The loco as before will be called "Locomotion".

Gloucester saw its first railway in 1840 when the Birmingham and Gloucester Railway arrived in the city. It used what was known as standard gauge track of 4 feet 8 1/2 inches between the rails. This was the gauge used by Robert Stephenson for his line from Liverpool. The railway company were persuaded to call at Cheltenham but only on the edge of the town, which has left Cheltenham with a dark damp station at Lansdown a long walk into town. In 1844 the Bristol and Gloucester Railway arrived in the city using Brunel's broad gauge of 7 feet and quarter of an inch. This was to cause major confusion for the transport of goods and passengers going north and south. Everything had to be unloaded and reloaded across the platform.

In 1849 Queen Victoria and Prince Albert were travelling from Balmoral to Osborne House on the Isle of Wight. Due to Cholera in London they had to travel via Birmingham and Gloucester to Portsmouth. On arrival at Gloucester a red carpet was laid out for the Queen to walk from one train to the other. There were crowds to greet her with a brass band and the Mayor and Bishop of Gloucester. As the train proceeded through Stroud towards Sapperton Tunnel the Queen is said to have looked out of the window. She is reported to have said, "This looks like a golden valley" so ever after the line was known as the Golden Valley Line.

By 1892 Parliament ruled that the broad gauge should be done away with. A mixed gage line had been laid to Bristol but the standard gage had won. Conversion of the gauge was undertaken in very short time, all the locos being scrapped at Swindon.

When the Midland Railway took over the Birmingham route whose headquarters were in Derby, they built a new station in Gloucester called Eastgate which opened in April 1896. A new line was built called the Tuffley loop to rejoin the main line south of Gloucester. This meant there were five level crossings much to the annoyance of car drivers. Eastgate Station was linked to the Great Western Central Station by a 190 yard wooden bridge lit by gas lamps.

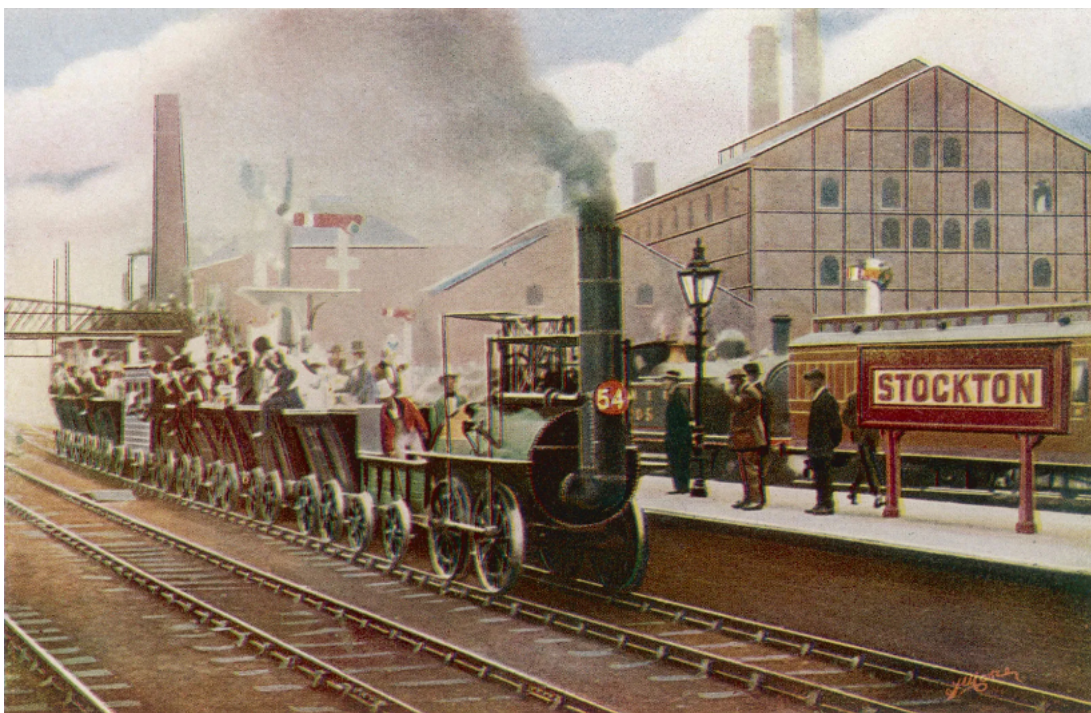
The Tuffley loop also ran into the docks over Bristol Road. Eastgate Station closed in December 1975 but the trees that lined its entrance are still there by Asda.

Many local people worked on the railway either for the Midland or Great Western. Many streets in the Barton area were built for railway workers and those who worked at the Carriage and Wagon works. One of those who lived in Upton was the late Mr Brian Hicks who lived in Pinlocks. He was a driver working from Horton Road Depot, he drove steam and diesels for many years.

I remember having many chats with him about steam locos on the GWR (Gods Wonderful Railway). I was very proud to receive his photograph collection of him driving various locos from his wife when he passed away.

There is a lot to tell about 200 years of railway history that would take up more space than I have here.

**Mike Stratford**



# Advertising

If you use any of the services provided by our advertisers, please mention that you saw them in USL Life. They can then understand the impact of their advertising. Thank you

## Little Court Cottages

Self-catering accommodation for holidays and short breaks, in Upton St Leonards, perfect for visiting friends and family.  
Email: [info@littlecourtcottages.co.uk](mailto:info@littlecourtcottages.co.uk)  
**Tel: 01452 615150**  
[www.littlecourtcottages.co.uk](http://www.littlecourtcottages.co.uk)




## HICKS ELECTRICAL SOLUTIONS LTD

Local approved electrician, highly experienced.

Honest, friendly and professional with very high standards.

All work considered – inspection and testing, upgrades, extensions, repairs.

Fully insured.

Call or email for a free consultation & quotation  
[ben@hickselectricalsolutions.co.uk](mailto:ben@hickselectricalsolutions.co.uk)

**Phone: 01452 538969**  
**Mobile: 07981 797894**



## Brothertons

### Accountants & Tax Advisors

Personalised, friendly service to local business owners and individuals

All Aspects of Accountancy:

- Self Assessment Tax Returns
- Sole Trader Accounts
- Limited Companies
- VAT
- Payroll
- Bookkeeping

*Local family firm  
Established 1998  
Free initial meeting  
Fixed quotes*

2 Abbeymead Avenue, Gloucester GL4 5ER  
01452 311711  
[www.brothertons.co.uk](http://www.brothertons.co.uk)  
email [info@brothertons.co.uk](mailto:info@brothertons.co.uk)

## N.T. Boothroyd

### Plumbing & Heating

Est. 1986

All Plumbing & Heating Work Undertaken & No Job too small !  
Boiler & Fire Servicing  
Central Heating Systems  
Landlord Certificates, etc.

Glos: 01452 552192  
Chelt: 01242 250497  
Mob: 07816 103709  
[ntboothroyd@hotmail.co.uk](mailto:ntboothroyd@hotmail.co.uk)





## Rachel Harris

Dip CFHP MPSPract

### Foot Health Practitioner

Home visits for all your footcare needs  
Professional and courteous service  
In the Gloucester area

**07791 901 220**  
[rachelh391@googlemail.com](mailto:rachelh391@googlemail.com)



## MICHAEL TUCK

### ESTATE & LETTING AGENTS

# SOLD IT!



READ OUR 582 REVIEWS

★★★★★

REVIEWS

**01452 612020**  
[www.michaeltuck.co.uk](http://www.michaeltuck.co.uk)



## PORTWAY FARM SHOP

Upton St Leonards GL4 8DP  
07774 955731 (during shop hours)

Our family owned business can supply you with fresh home produced and local Meat, home made Sausages & Burgers, Veg, Fruit, local Eggs, Cheese, Organic Milk, Cream, Yogurt, Flour, Coffee, Rapeseed Oil, Dressings, Mayonnaise, Preserves, Gloucestershire Fruit Juice, Cordials, Bread, home made Cakes, Pies, Quiche, Ice Cream.

Visit our Coffee Shop for a relaxing time.

Email: [portwayfarmshop@btinternet.com](mailto:portwayfarmshop@btinternet.com)  
[www.portwayfarmshop.com](http://www.portwayfarmshop.com)

**OPEN**  
Tuesday to Friday  
9am to 5.30pm

Saturday  
8am to 3pm

Closed  
Sunday & Monday

For the latest offers, specials and news see Facebook @PortwayFarmShop




## Local Honey

AS NATURE INTENDED

15% OFF CODE: USL15

RAW HONEY LOCAL BEEKEEPER

BUY OUR PRODUCTS ONLINE  
[STORE.BOUNTIFULBEES.UK](http://STORE.BOUNTIFULBEES.UK)

@BOUNTIFULBEESUK +44 1452 447051  
@BOUNTIFULBEES

BOUNTIFUL BEES, SKYLARK WAY, GLOUCESTER GL4 4QY

## AUGUST

1	Fri	Upstagers – Flat Spin (doors/bar open 6.45p.m.)	Village Hall	7.30p.m.
2	Sat	Upstagers – Flat Spin (doors/bar open 6.45p.m.)	Village Hall	7.30p.m.
2	Sat	Entertainment Night	BMI	8.00p.m.
3	Sun	Tennis Club Members Morning	Tennis Courts	10.00a.m.
4	Mon	Coffee Club	BMI	10.00a.m.
5	Tue	Needles & Pins	Village Hall Annex	9.45a.m.
5	Tue	Rubbish and food waste week – garden rubbish for those with brown bins		
5	Tue	Tennis Club Members Evening	Tennis Courts	6.00p.m.
5	Tue	Badminton	Village Hall	8.00-10.00p.m.
6	Wed	Wednesday Probus	BMI	10.00a.m.
6	Wed	Upstagers Amateur Dramatics	Village Hall	7.30p.m.
6	Wed	Bell Ringing Practice	Church	7.30p.m.
6	Wed	Bingo	BMI	8.00p.m.
9	Sat	Summer Party/Pig Roast	BMI	3.00p.m.
10	Sun	Tennis Club Members Morning	Tennis Courts	10.00a.m.
10	Sun	Copy date for September issue of USL Life		
11	Mon	Coffee Club	BMI	10.00a.m.
12	Tue	Needles & Pins	Village Hall Annex	9.45a.m.
12	Tue	Tuesday Probus	BMI	10.00a.m.
12	Tue	Recycling and food waste week		
12	Tue	Tennis Club Members Evening	Tennis Courts	6.00p.m.
12	Tue	Badminton	Village Hall	8.00-10.00p.m.
13	Wed	Ladies Probus	BMI	10.00a.m.
13	Wed	Upstagers Amateur Dramatics	Village Hall	7.30p.m.
13	Wed	Bell Ringing Practice	Church	7.30p.m.
13	Wed	Bingo	BMI	8.00p.m.
17	Sun	Tennis Club Members Morning	Tennis Courts	10.00a.m.
18	Mon	Coffee Club	BMI	10.00a.m.
18	Mon	Abbeydale Garden Club	Village Hall	7.30p.m.
19	Tue	Needles & Pins	Village Hall Annex	9.45a.m.
19	Tue	Rubbish and food waste week – garden rubbish for those with brown bins		
19	Tue	Tennis Club Members Evening	Tennis Courts	6.00p.m.
19	Tue	Badminton	Village Hall	8.00-10.00p.m.
20	Wed	Wednesday Probus	BMI	10.00a.m.
20	Wed	Bell Ringing Practice	Church	7.30p.m.
20	Wed	Upstagers Amateur Dramatics	Village Hall	7.45p.m.
20	Wed	Bingo	BMI	8.00p.m.
24	Sun	Tennis Club Members Morning	Tennis Courts	10.00a.m.
25	Mon	August Bank Holiday		
25	Mon	Coffee Club	BMI	10.00a.m.
26	Tue	Recycling and food waste week		
26	Tue	Tuesday Probus	BMI	10.00a.m.
27	Wed	Bell Ringing Practice	Church	7.30p.m.
27	Wed	Upstagers Amateur Dramatics	Village Hall	7.45p.m.
27	Wed	Bingo	BMI	8.00p.m.
28	Thu	Craft Club	The Old School Room	10.00-12.00p.m.

## SEPTEMBER

1	Mon	Upton WI	Pavilion	2.30p.m.
1	Mon	Parish Council Meeting	Pavilion	7.30p.m.
8	Mon	Twyver WI	Village Hall	7.30p.m.
13	Sat	Upton Show	Village Hall	2.00p.m.
15	Mon	Abbeydale Garden Centre	Village Hall	7.30p.m.

18	Thu	History Group – Henry V111's Royal Progress through Gloucestershire in 1535 – Alan Pilbeam	Village Hall	7.45p.m.
21	Sun	Evening Jazz	BMI	6.00-8.00p.m.
24	Wed	Ladies Probus	BMI	10.00.a.m.
25	Thu	Craft Club	The Old School Room	10.00-12.00p.m.
27	Sat	Entertainment Night	BMI	8.00p.m.

### OCTOBER

4	Sat	Entertainment Night	BMI	8.00p.m.
6	Mon	Upton WI	Pavillion	2.30p.m.
10	Fri	Copy date for November issue of USL Life		
11	Sat	"George Michael Tribute"	BMI	8.00p.m.
13	Mon	Twyver WI	Village Hall	7.30p.m.
18	Sat	Autumn Quiz	BMI	8.00p.m.
20	Mon	Abbeylea Garden Club	Village Hall	7.30p.m.
22	Wed	Ladies Probus	BMI	10.00a.m.
25	Sat	Entertainment Night	BMI	8.00p.m.
30	Thu	Craft Club	The Old School Room	10.00-12.00

**If you would like an event included in the Village Diary, please contact Paula Quinn**

### Weekly Courses

Activity	Day	Venue	Contact	
Yoga	Mondays 10am	Village Hall Annex	Lara Bricknell	07876 764425
Art Class	Tuesdays 2pm	Village Hall Annex	Christine Hughes	01452 614227
Dance Workout	Tuesdays 7pm	Pavilion	Debra Law	07505 761420
Pilates with Sam	Fridays 9.30am	Village Hall Annex	Sam Slatter	07894 757360

A new class is starting up in the Pavilion at 1.45pm every Tuesday from August 12. The class is called "Chairobics", with instructor Tina Short. This replaces the Chair Pilates class that used to run on Wednesdays. Booking is still done through Angela Harris.

### St Leonards Church, Upton St Leonards

#### Roof Repair Project

**Raise the Roof**  
**The Church Roof Fund**

Following on from my last update in the June edition of USL Life – we have moved forward reasonably positively!

The new Bat survey has now been completed, and early indications are that the bats have deserted the Church roof. I do not know what we did or said to them to cause them to move house, but we wish them well wherever they have gone!

The survey was very thorough and involved three visits by the ecology team when they set up infrared sensitive cameras around the Church which would record any flight activity by bats emanating from the church. The data is then studied by the team who will submit details to the architect. We must now await the report from the ecology company who, hopefully will advise that we do not need a bat licence and allow us to proceed with a cautionary recommendation.

We can then negotiate a definite (as definite as you can get) start date to have the roofs replaced with the roofing contractor. The project should take around 16 weeks to complete, assuming the weather is kind to us and conditions are as we would wish them to be. In a project of this size unexpected delays may happen.

In the meantime, the fund continues to grow and has received a further £1100 from the Church Fete, £1040 raised from Lent Lunches, £581 raised by the Call my Bluff evening and it is worth noting that this year alone we have received over £6500 in interest on the roof funds on deposit.

Thanks once again to all the organisers of events and everyone who continues to support the Raise the Roof Appeal, it is very much appreciated and will help us reach our goal.

**Richard Sugdon, Project Manager**

## TWYVER WI MEETING 14 JULY 2025

As we filed into the meeting we were met by the sight of several 'finds' tables laid out by our Speakers for the evening - 'The Upton Swingers Metal Detecting Club' - started by a brotherhood of friends who meet up regularly in convivial surroundings at the BMI, our well known village social club. What we didn't realise was that this was to be their first foray into public speaking in the daunting presence of a room full of WI members but the evening went gloriously. They had apparently been rehearsing for weeks prior to their debut and all was very professional. In fact by the end of the evening we all agreed that this was definitely at or near the top of our all time speaker events we have ever held!



In order to be detectorists the National Regulations and Codes of Practice have to be followed and adhered to, permissions have to be applied for and granted by farmers, landowners and tenants in order to detect for objects in fields, etc. The equipment used can be cheap or expensive depending on whether you are a beginner or a serious detector but the thrill of a big 'find' is always the end goal. Historical maps and Lidar maps are used as a tool for detecting.

Our members were invited to try out detectors over objects and listen for and read the feedback on the equipment and thereby guess the quality of the find .... was it a nail or was it a precious coin, our ladies had great fun. The different sounds were explained to us and the demos were accompanied during the evening by projector and screen shots. One image was of a gold mourning ring from 1679 found by Andy Skelton somewhere close to the village which turned out to be real treasure worth a few thousand pounds. It was bought by a museum and the money shared between the landowner, the detectorists and local charities. Quite a lot of charities have benefitted from their finds. Point of interest - Southern Ireland has banned metal detecting completely.



The 'finds' laid out were amazing and practically all of the artefacts and objects were found in or around the Upton area. Thanks were given for a great evening.

As usual there will be no meeting in August, but in September we will start off with Zumba. Have a great summer everyone and look forward to seeing you on 8<sup>th</sup> Sept.

**Linda Munnoch**



### UPTON ST LEONARDS LIFE

Web site <https://usllife.org.uk>

To contact us, use the website above or the postbox by the Village Hall main door, or use the contact details that appear below:

This month's editor: Peter Wilson  
 Editors: Andrea Dawson  
 Andy Russell  
 Barbara Swindin  
 Peter Wilson  
 Company Secretary: Cliff Alderman  
 Treasurer: David Morris  
 Feature writers: Linda Munnoch  
 Ann Morphew  
 Jane Reed  
 Church pages: Rachel Middleton  
 Clubs/Societies/ Organisations: Catherine McLean  
 Diary: Paula Quinn

Advertising: Contact: Andy Russell

Admin Support: Tracy Slator  
 Sales Support: Julie Watson  
 Distribution: Jenny Cunningham

Photography: Jim Browne  
 Proof Readers: Carol Hardacre  
 Pam Tickner  
 Kate Davies

USL Life is published by USL Life CIC, a Limited Company, and is printed at Pip Printing, Nettl of Hereford.

### Next month's Editor Andy Russell



Use the postbox at the Village Hall or via the "Contact Us" box on our web page to pass messages to us.

**DISCLAIMER:** USL Life welcomes adverts for goods and services but reminds readers to make their own checks before entering into any contract or other arrangements with advertisers, as USL Life cannot be held responsible for the accuracy of the advertisements.

## The Twyver Walkers Monthly Walk

This was our group enjoying our July walk along the canal from the Pilot Inn at Hardwick.



## BMI Entertainment (including Charity presentation)

On Saturday 5th July, local band “Tribune” entertained members and signed in guests at the BMI. This was also the night that cheques were presented to the two nominated BMI charities for 2024-2025. These were “Charlies” and “Gloucester City Mission”.

Andrew Skelton spoke briefly about each of the recipients before the BMI president, Mike Long, presented the cheques. Cheques to the value of £1145 were donated and gratefully accepted by both charities.

Mike Long, President of the BMI presenting a cheque to Gemma from the Gloucester City Mission



Mike Long presenting a cheque to Lin and Emma from Charlies



We would also like to thank all the members and guests who support the nominated charities each year, with the Quizzes, Raffles and the Saturday Bonus Ball.

## Thank you for your service!!

Approximately twenty-five years ago, Peter Macey “put his hands up” to be The Stanley Allotment Manager and his was the only hand!!

The Parish Council recently presented Peter with a gift as a token of their appreciation.

Well done Peter and thanks for all your hard work. We need more volunteers like you in Upton to help cover the things that need to be done.

